



## Rabbit anti C-erbB3/HER3 (Paired Y1283) Polyclonal Antibody

Alternative Name(s): c-erbB3; tyrosine kinase-type cell surface receptor HER3

### Order Information

- **Description:** C-erbB3/HER3 (Paired Y1283)
- **Catalogue:** 602-530
- **Lot:** See label
- **Size:** 100ug/200ul
- **Host:** Rabbit
- **Clone:** nan
- **Application:** IHC(P), WB
- **Reactivity:** Hu

### **ANTIGEN PREPARATION**

A synthetic peptide PASEQGYEEMRAFQGP of human c-erbB3.

### **BACKGROUND**

c-erbB3 is a member of the epidermal growth factor receptor (EGFR) family of receptor tyrosine kinases, which comprises several related receptor tyrosine kinases that are frequently overexpressed in a variety of carcinomas. Members of this receptor family include EGFR (HER1), Neu (ErbB-2, HER2), ErbB-3 (HER3) and ErbB-4 (HER4), which form either homodimers or heterodimers upon ligand binding. C-erbB3 is overexpressed in numerous cancers, including prostate, bladder, and breast tumors.

### **PURIFICATION**

The Rabbit IgG is purified by Epitope Affinity Purification

### **FORMULATION**

This affinity purified antibody is supplied in sterile Phosphatebuffered saline (pH7.2) containing antibody stabilizer

### **SPECIFICITY**

This antibody recognizes human C-erbB3/HER3 protein without a phosphorylation site Y1283.. The other species are not tested.

### **STORAGE**

The antibodies are stable for 24 months from date of receipt when stored at  $-20^{\circ}\text{C}$  to  $-70^{\circ}\text{C}$ . The antibodies can be stored at  $2^{\circ}\text{C}$ - $8^{\circ}\text{C}$  for three month without detectable loss of activity. Avoid repeated freezing-thawing cycles.

### **APPLICATIONS/SUGGESTED WORKING DILUTIONS\***

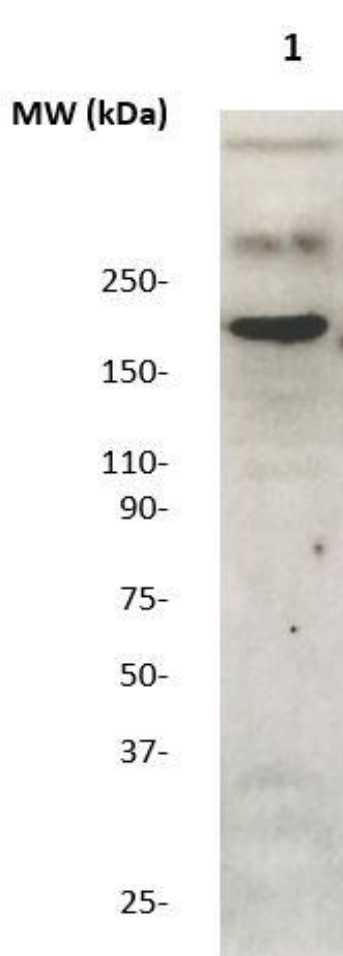
- Western Blot: 0.1-1  $\mu\text{g/ml}$
- ELISA: 0.01-0.1  $\mu\text{g/ml}$
- Immunoprecipitation: 2-5  $\mu\text{g/ml}$
- IHC: 2-10  $\mu\text{g/ml}$
- Flow cytometry: Not tested
- Molecular Weight: 185.0
- Positive Control: Kidney Tissue
- Cellular Location: Cell Membrane

\*Optimal dilutions should be determined by researchers for the specific applications.

### **FOR RESEARCH USE ONLY.**

AbboMax, Inc 2528 Qume Drive, Suite 8, San Jose, California 95131, USA  
1 408-573-1898 (Tel). 1 408-573-1858 (Fax). [www.abbomax.com](http://www.abbomax.com) [info@abbomax.com](mailto:info@abbomax.com)

**DATA ATTACHMENTS**



Western Blot: The whole lysate derived from HeLa (20 ug/lane) immunoblotted by Rabbit anti - c-erbB3 (paired 1283) (Cat# 602-530) at 1:500. Observed a major immunoreactive band at molecular weight ~185 kDa.

**REFERENCES**

**FOR RESEARCH USE ONLY.**